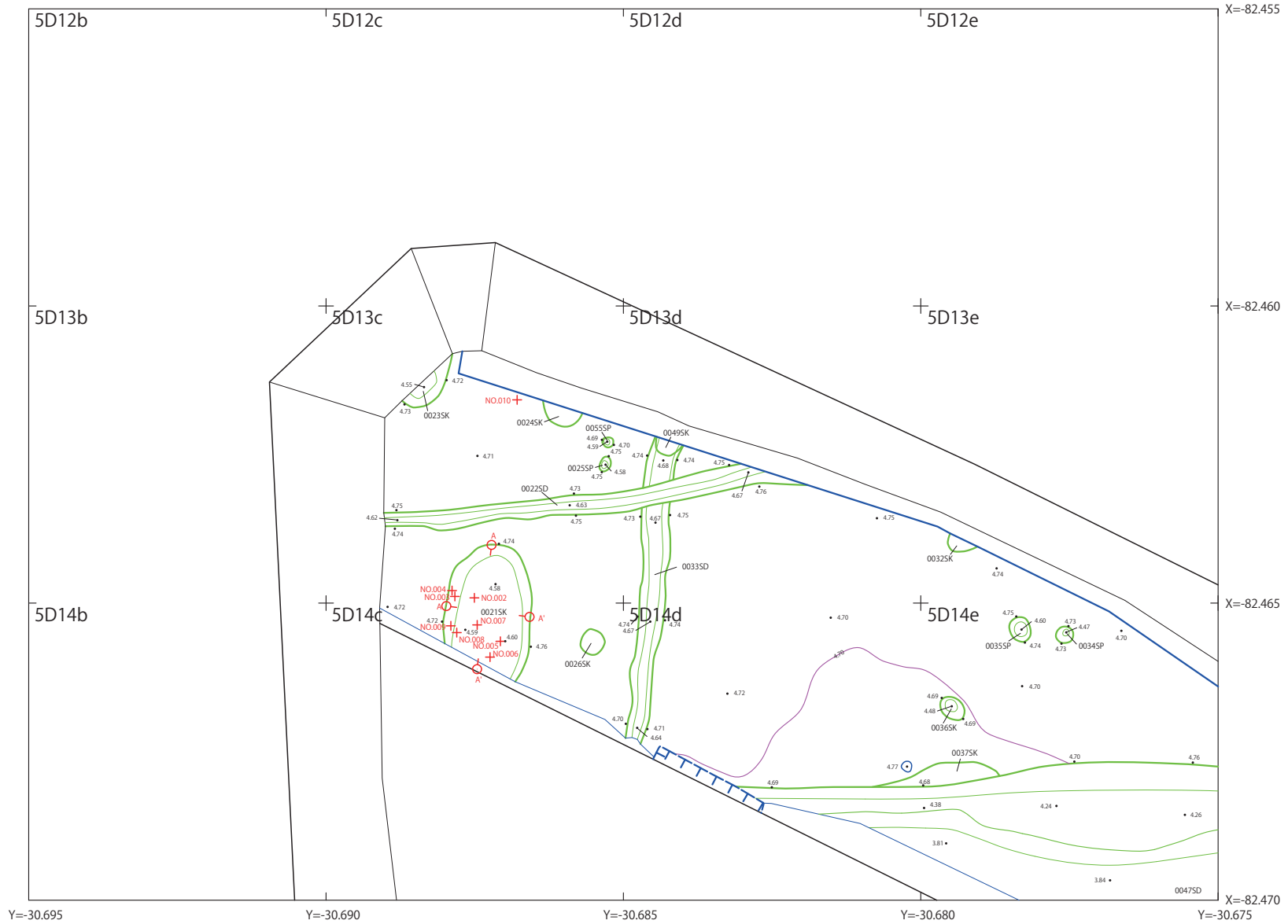


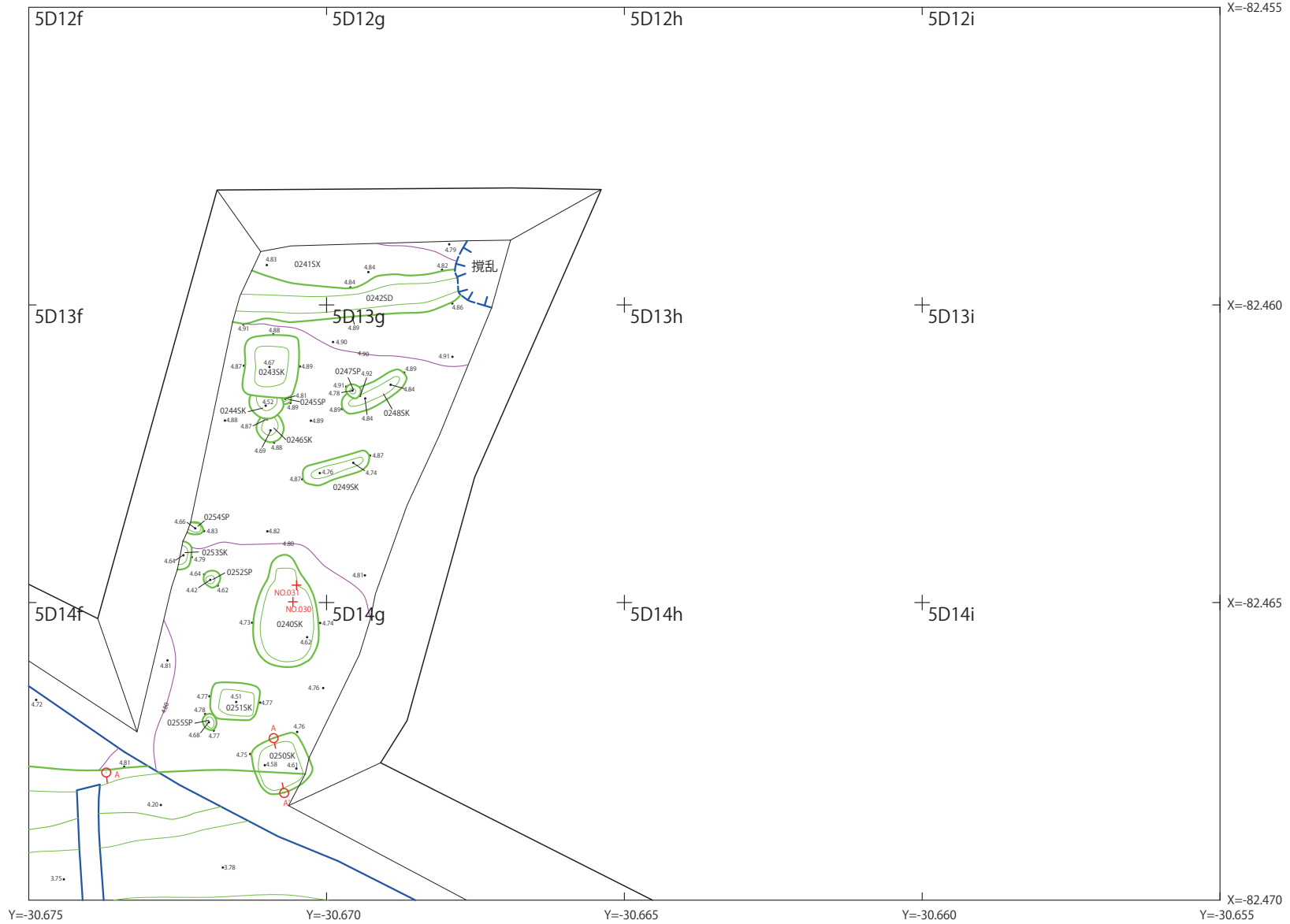
S = 1:100

3	2		
	4	5	
	6	7	8



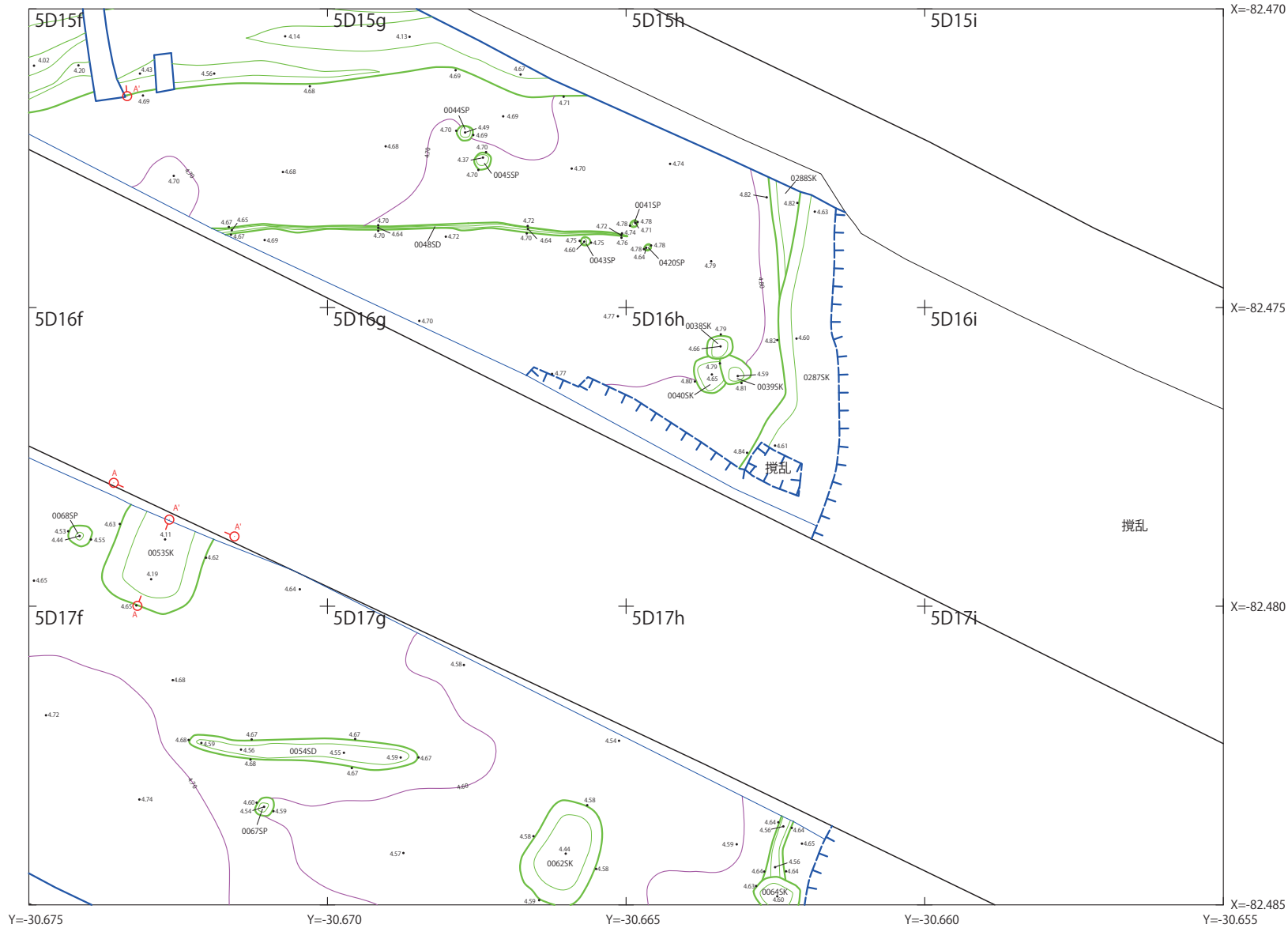
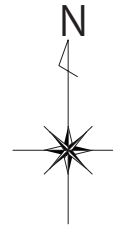
S = 1:100

1	2		
3	4	5	
	6	7	8



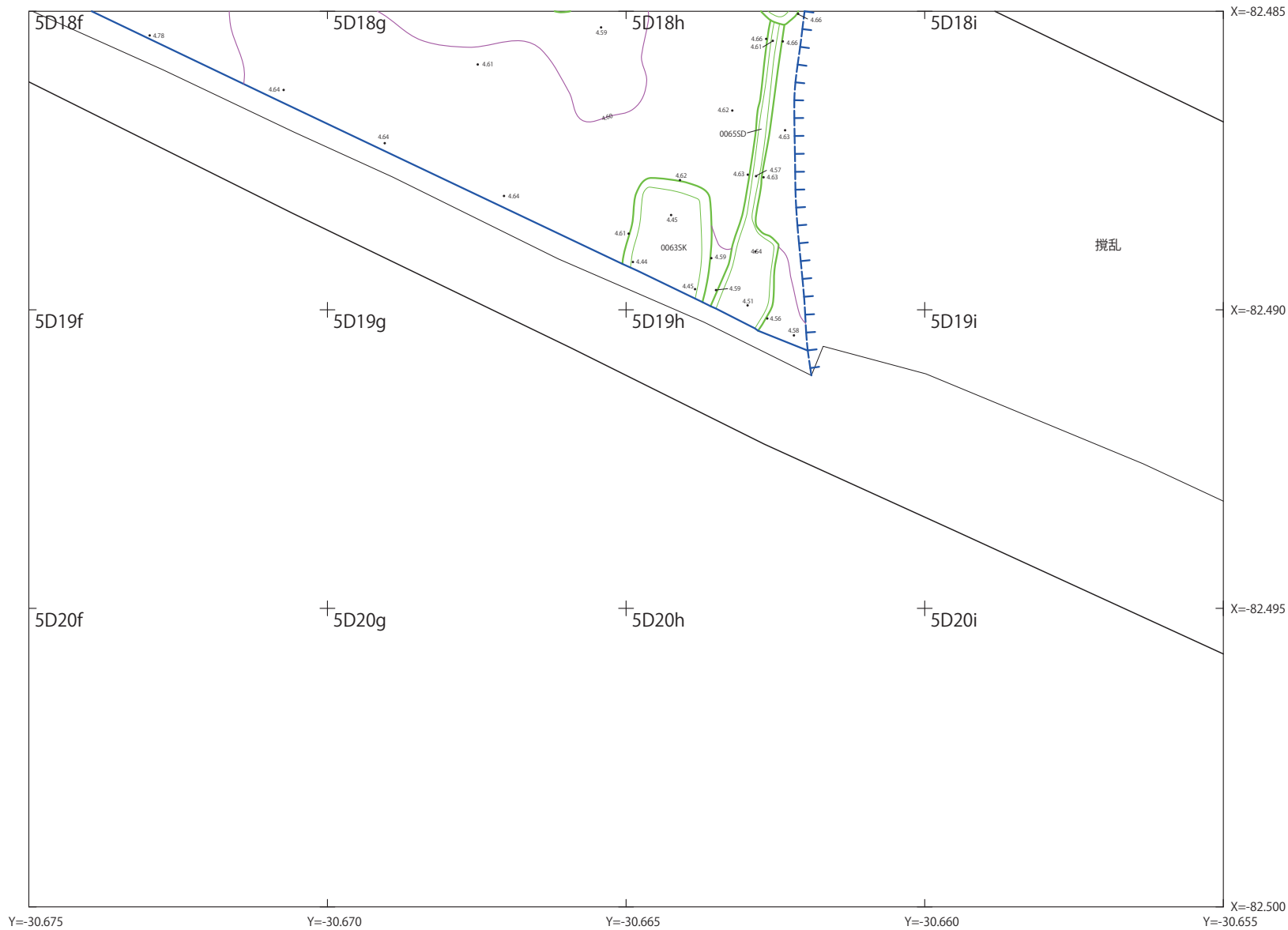
S = 1:100

1	2		
3	4	5	
	6	7	8



S = 1:100

1	2		
3	4	5	
	6	7	8



S = 1:100

1	2		
3	4	5	
	6	7	8

